



JOHN EDMONDSON HIGH SCHOOL

Assessment Notification

Faculty: Creative and Performing Arts Course: Music Year: 7

Assessment Task: #1 Composition for Keyboard & Performance

Assessment Weighting: 40% (10% Composition & 30% Performance) Due: Term 1 Week: 8/9

Date: To be advised by your classroom teacher

Task Type: Hand in Task In Class Task Practical Task

Outcomes assessed (NESA)

4.1, 4.2, 4.3

Task Description

Compose and perform a 4 bar piece for Keyboard (Right Hand).

Detailed Assessment Task Description

Choose the level that you would like to attempt (Level 1(easier),2,3 (more challenging)).

1. **Compose your own 4 bar piano piece** using the keyboard.
Notate and **submit your composition**.

2. **Perform** your composition in class

Level 1:

Maximum Performance mark 6/10. Maximum Composition mark 6/10.

The composition should be **notated on the music staff** and use the following notes: **C, D & E**

Level 2:

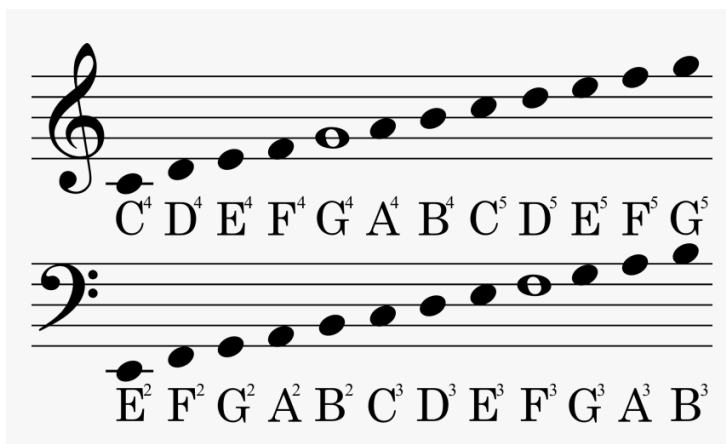
Maximum Performance mark 8/10. Maximum Composition mark 8/10.

The composition should be **notated on the music staff** and use the following notes: **C, D, E, F, G**

Level 3:

Maximum Performance mark 10/10. Maximum Composition mark 10/10.

The composition should be **notated on the music staff** and use the following notes: **C, D, E, F, G** for the **RIGHT HAND** – Written on the **Treble Clef** and **C, G** in the **LEFT HAND** – Written on the **Bass Clef**.



You need to compose and perform either Level 1, Level 2 or Level 3.

The maximum mark = choice of level.

Assessment Criteria: Composition Level 1 Maximum Mark 6/10		Marking
Grade	Description	Mark Range
Sound (S)	Uses all notes for composition (C, D, and E) Minimum of 4 bars Written neatly in Traditional notation and in correct positions on the stave	5-6
Basic (B)	Some attempt at use notes for composition. Written in Traditional notation; may be on incorrect parts of the stave	3-4
Limited (L)	Little or no evidence of Composition criteria.	1-2

Assessment Criteria: Performance Level 1 Maximum Mark 6/10		Marking
Grade	Description	Mark Range
Sound (S)	Plays all notes as written with up to one mistake. Performs with a sense of timing . Executes piano sounds with clarity .	5-6
Basic (B)	Plays all notes as written with two or more mistakes . Performs with a basic sense of timing . Executes piano sounds with some clarity .	3-4
Limited (L)	Little or no evidence of Performance criteria.	1-2

Assessment Criteria: Composition Level 2 Maximum Mark 8/10		Marking
Grade	Description	Mark Range
High (H)	Uses a large range of notes for composition (C, D, E, F, G for the RIGHT HAND - Treble Clef). Uses minimum of 4 bars . Written neatly in Traditional notation and in correct positions on the stave.	7-8
Sound (S)	Uses some notes for composition. Minimum of 4 bars . Written neatly in Traditional notation and mostly correct positions on the stave.	5-6
Basic (B)	Some attempt at use notes for composition. Written in Traditional notation; may be on incorrect parts of the stave.	3-4
Limited (L)	Little or no evidence of Composition criteria.	1-2

Assessment Criteria: Performance Level 2 Maximum Mark 8/10		Marking
Grade	Description	Mark Range
High (H)	Plays all notes as written. Performs with a very good sense of timing . Executes piano sounds with clarity .	7-8
Sound (S)	Plays all notes as written with up to one mistake. Performs with a sense of timing . Executes piano sounds with clarity .	5-6
Basic (B)	Plays all notes as written with two or more mistakes . Performs with a basic sense of timing . Executes piano sounds with some clarity .	3-4
Limited (L)	Little or no evidence of Performance criteria.	1-2

Assessment Criteria: Composition Level 3 Maximum Mark 10/10		Marking
Grade	Description	Mark Range
Outstanding (O)	Uses all notes for composition (C, D, E, F & G for the RIGHT HAND -Treble Clef and C & G for the LEFT HAND - Bass Clef). Written neatly in Traditional notation and in correct positions on the stave.	9-10
High (H)	Uses a large range of notes for composition. Uses minimum of 4 bars . Written neatly in Traditional notation and in correct positions on the stave.	7-8
Sound (S)	Uses some notes for composition. Minimum of 4 bars . Written neatly in Traditional notation and mostly correct positions on the stave.	5-6
Basic (B)	Some attempt at use notes for composition. Written in Traditional notation; may be on incorrect parts of the stave.	3-4
Limited (L)	Little or no evidence of Composition criteria.	1-2

Assessment Criteria: Performance Level 3 Maximum Mark 10/10		Mark Range
Grade	Description	Mark Range
Outstanding (O)	Plays all notes as written. Performs with an excellent sense of timing. Executes piano sounds with great clarity .	9-10
High (H)	Plays all notes as written. Performs with a very good sense of timing . Executes piano sounds with clarity .	7-8
Sound (S)	Plays all notes as written with up to one mistake. Performs with a sense of timing . Executes piano sounds with clarity .	5-6
Basic (B)	Plays all notes as written with two or more mistakes . Performs with a basic sense of timing . Executes piano sounds with some clarity .	3-4
Limited (L)	Little or no evidence of Performance criteria.	1-2

Satisfactory completion of courses

A course has been satisfactorily completed, when the student has:

- Followed the course developed/endorsed by the NSW Educational Standards Authority (NESA)
- Applied himself/herself with diligence and sustained effort to the set tasks and experiences provided in the course.
- Achieved some or all of the course outcomes